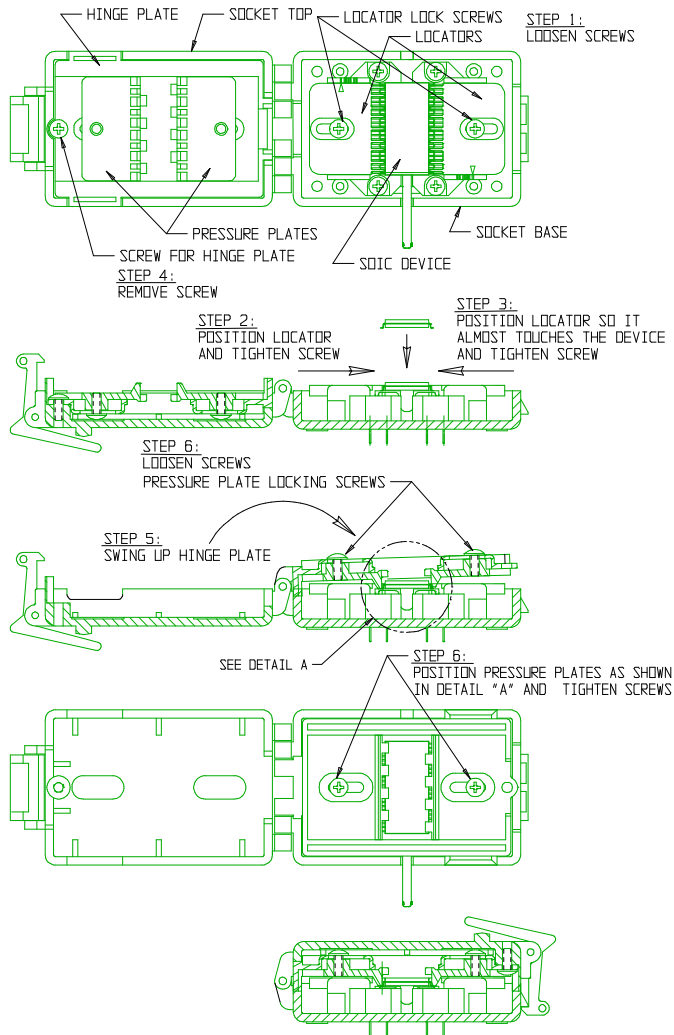




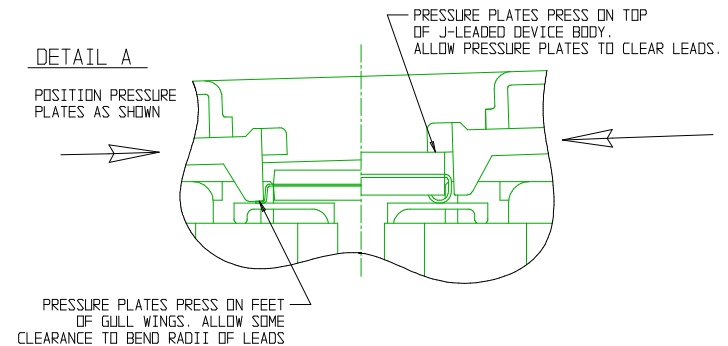
INSTRUCTIONS FOR UNIVERSAL SOIC SOCKET



SETUP OF SOCKET

1. LOOSEN LOCATOR LOCK SCREWS.
2. SLIDE ONE OF THE LOCATORS TO A POSITION THAT WOULD PLACE THE DEVICE TO BE TESTED CENTRALLY ON THE CONTACTS AND TIGHTEN ITS LOCK SCREW.
3. SLIDE THE SECOND LOCATOR IN UNTIL IT ALMOST TOUCHES THE DEVICE, AND TIGHTEN THE LOCATORS LOCK SCREW. (CLEARANCE IS REQUIRED FOR EASE OF LOADING AND REMOVAL.)
4. REMOVE SCREW FOR HINGE PLATE.
5. SWING HINGE PLATE UP OUT OF SOCKET TOP.
6. LOOSEN PRESSURE PLATE LOCKING SCREWS AND SLIDE THEM OUT.
7. POSITION PRESSURE PLATES SO THEY WILL PRESS DOWN ON THE FEET (PART OF LEAD THAT GETS SOLDERED TO BOARD) OF A GULL WING DEVICE (SEE DETAIL A), IF THE DEVICE HAS J-LEADS POSITION PRESSURE PLATES TO PRESS DOWN ON TOP OF DEVICE'S BODY (SEE DETAIL B) AND TIGHTEN THE LOCKING SCREWS. IT IS SUGGESTED TO SET HINGE SIDE FIRST.
8. SWING HINGE PLATE BACK INTO THE SOCKET TOP AND TIGHTEN THE SCREW FOR THE HINGE PLATE.
9. DOUBLE CHECK YOUR SETTINGS.

DETAIL A



 **ARIES**[®]
ELECTRONICS, INC.
<http://www.arieselec.com> • info@arieselec.com

NORTH AMERICA
Frenchtown, NJ USA
TEL: (908) 996-6841
FAX: (908) 996-3891



EUROPE
TEL: +44 870 240 0249
FAX: +44 871 919 6033
europa@arieselec.com

PRINTOUTS OF THIS DOCUMENT MAY BE OUT OF DATE AND SHOULD BE CONSIDERED UNCONTROLLED

10020
REV.B