

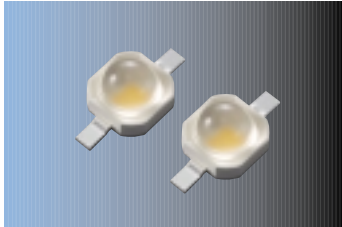
**7070 Series**

Warm White Lens

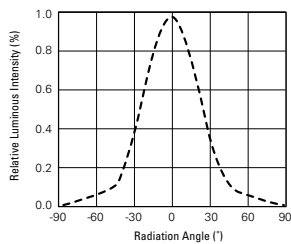
High Power LED Sunnix5™



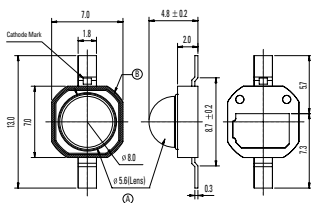
# SLHNNWW511T1



Radiation Diagram(55°)

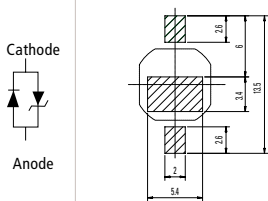


Package Outline

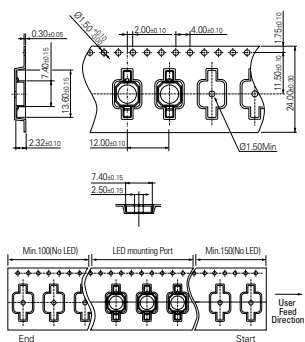


Unit:mm, T=25°C

Polarity Recommended Soldering Pattern



Carrier Tape



**Absolute Maximum Ratings** T=25°C

Item	I <sub>f</sub> (mA)	T <sub>j</sub> (°C)	T <sub>stg</sub> (°C)	T <sub>sid</sub>	T <sub>opr</sub>
Value2	350	125	-40 ~ 110	260°C, 10sec	-40 ~ 85

**Electrical Characteristics** T=25°C

Item	Symbol	Condition	Min.	Typ.	Max.	Unit
Forward Voltage	V <sub>f</sub>	350mA	3.0	3.5	4.0	V
Reverse Voltage	V <sub>r</sub>	10mA	0.5	-	2.0	

※ Tolerance : V<sub>f</sub> ±0.1V

**Chromaticity Coordinate** T=25°C, @350mA

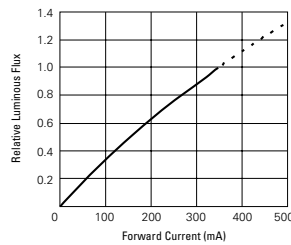
Rank	CCx				CCy				CCT
	S0	T0	U0						
S0	0.3428	0.3700	0.3863	0.3471	0.3138	0.3322	0.4050	0.3818	4,000~5,000
T0	0.3700	0.4370	0.3863	0.3700	0.3322	0.3551	0.4310	0.4050	3,300~4,000
U0	0.4041	0.4440	0.4880	0.4370	0.3551	0.3700	0.4490	0.4310	2,600~3,300

※ Tolerance: x,y ±0.02

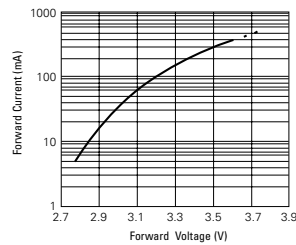
Part Number	Dimension (mm)	Rank	Luminous Flux (lm)			Condition	CRI	Viewing Angle 2θ 1/2(degree)
			Min.	Typ.	Max.			
SLHNNWW511T1	7.0×7.0×4.8t	F1	50	58	60	350mA	80	55°
		G1	60	65	70			
		H1	70	-	80			

※ Tolerance ±10%

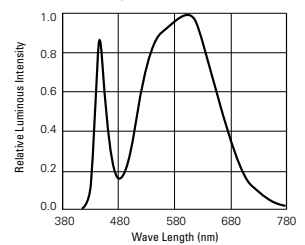
Relative Luminous Flux vs Forward Current



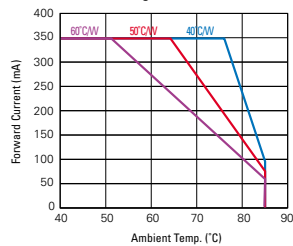
Forward Current vs Forward Voltage



Spectrum Distribution



Derating Curve for 350mA



CIE Coordinate

